



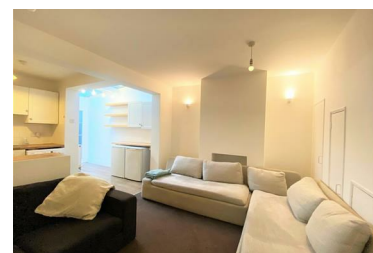
Kingsbury Street, Brighton, BN1 4JW

£2,550 PCM



A four bedroom HMO in very central Brighton, tucked away down a quiet road and just moments from London Road / Brighton station. Good size living area, open plan kitchen, private south facing decked garden, four double bedrooms, white bathroom suite, gas central heating, FURNISHED. Viewing recommended, further details upon request.

- Attention Students
- GFCH
- Good Size Lounge
- Viewing Recommended
- Furnished
- Double Bedrooms
- Bath & Shower



109 Church Road, Hove, East Sussex, BN3 2AF

01273 321333 • enquiries@propertymoves.co.uk <https://www.propertymoves.co.uk>