



## St James Avenue, East Sussex, BN2 1QD

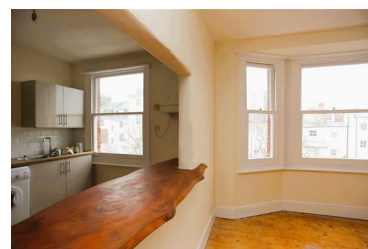
**£1,300 PCM**



A fantastic one bedroom top floor flat situated moments from the seafront and the city centre. The flat comprises plenty of natural light, wooden flooring throughout, a spacious living room with bay windows and serving hatch to the kitchen, a separate modern fitted kitchen with bespoke breakfast bar, good size double bedroom and part-tiled bathroom suite. Gas Central Heating. Viewing Recommended.

Council Tax Band: A

- Great Location
- Separate Fitted Kitchen
- Spacious Living Room
- Gas Central Heating
- Wooden Flooring
- Bespoke Breakfast Bar
- Good Size Double Bedroom
- Viewing Recommend



109 Church Road, Hove, East Sussex, BN3 2AF

01273 321333 • enquiries@propertymoves.co.uk <https://www.propertymoves.co.uk>