



## Regency Square, Brighton, BN1 2FF

**£1,300 PCM**



\*\*\* WATER RATES INCLUDED IN THE RENT \*\*\*

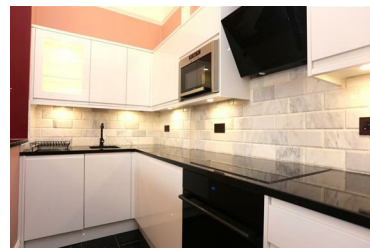
\*\*\* VIDEO TOUR AVAILABLE \*\*\*

A fantastic one bedroom ground floor flat situated in a period building moments from the seafront and Churchill Square. The property comprises a fantastic sea view, lovely oak flooring, high ceilings throughout, plenty of built-in storage, an open plan living room with marble fireplace and crystal chandelier, modern fitted kitchen with marble tiles and granite worktop, original marble tiled shower suite and good size double bedroom. Gas Central Heating. Viewing Recommended.

Council Tax Band: B

EPC Rating: C

- \*\*\* WATER RATES INCLUDED \*\*\*
- High Ceilings Throughout
- Built-In Storage
- Open Plan Living Room
- Modern Fitted Kitchen
- Tiled Shower Suite
- Good Size Double Bedroom
- Gas Central Heating



109 Church Road, Hove, East Sussex, BN3 2AF

01273 321333 • enquiries@propertymoves.co.uk <https://www.propertymoves.co.uk>