



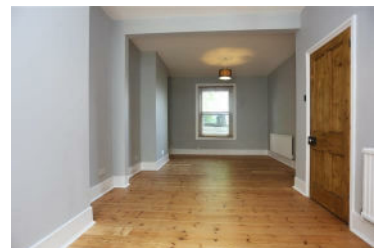
## Beaconsfield Road, Portslade, BN41 1XA

**£1,795 PCM**



A very well presented three bedroom family house very close to Victoria park & Portslade station. Light and spacious through lounge/diner with wooden floors, lovely modern separate kitchen, three bedrooms - two spacious doubles, modern bathroom suite with bath & shower, west facing garden, gas central heating, unfurnished. Viewing recommended.

- Near Portslade Station
- Wooden Floors
- Modern Kitchen
- Bath & Electric Shower
- Unfurnished
- Spacious Lounge Diner
- West Facing Garden
- Viewing Recommended



109 Church Road, Hove, East Sussex, BN3 2AF

01273 321333 • enquiries@propertymoves.co.uk <https://www.propertymoves.co.uk>